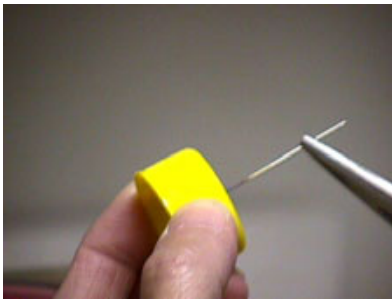


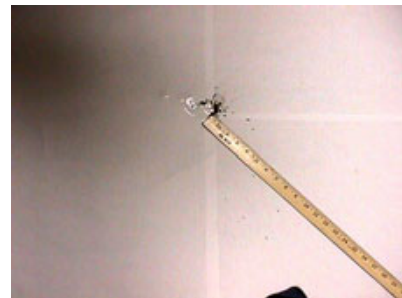
The Power of Raindrops



Cut a plastic pop bottle in half. Pierce the cap of the bottle with a hot needle to make a very small hole.



If the hole is small enough the water will drip very large drops, but very slowly. Measure the distance that the drops fall.



Measure the distance that the splashes of muddy soil have splashed from the center of a large white piece of paper. You can increase the distance of fall and graph distance fallen on the Y axis and distance splashed on the X axis.

As a class project : Can your results be replicated?